

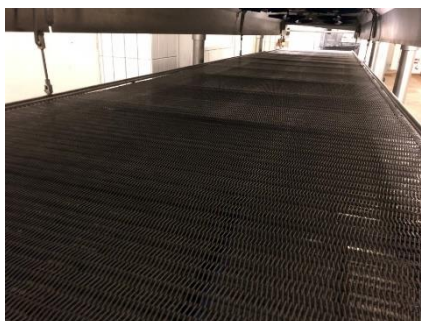
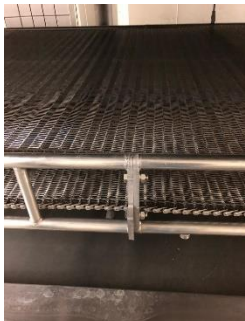


Linde Tunnel Freezer Nitrogen (LIN)

Model : Cryoline MT 11-1250
Can be Modified to CO 2 operation



Linde Cryogenic tunnel freezer, with touch screen control, retention time: 1.5 min - 50 min, suitable for a full range of fresh & cooked food products.
Product gap 100 mm , Belt width 1250 mm, Belt length 10000 mm, Infeed height 900 mm, Outfeed height 900 mm, Refrigerant Nitrogen (LIN), Cooling power 12 kW, Power 380-500 V / 3 ph, Number of fans 12, Dimensions 11130 mm x 2180 mm x 1730 mm



RM Support international BV

Mekkelholtsweg 20, 7523 DE Enschede , The Netherlands

Phone: +31 (0)74 256 9777, Cell phone: +31 (0)6 427 20 672

E-mail: info@rm-support.nl, Internet: www.interses.eu,

Commercial Reg. Enschede No. 94742839 , VAT No. NL, 866878257B01 IBAN: NL32 RABO 0386 2503 75

Unless notified or agreed on in writing, our General conditions govern all our tenders for and agreements on all our deliveries and services, registered by the Chamber of Commerce on November 14, 2013, number: 08133380. Any other conditions are herewith explicitly rejected by us. A copy of the conditions mentioned above is included or can be send to you on request, free of charge. The conditions are also available on our website: www.rm-support.nl.