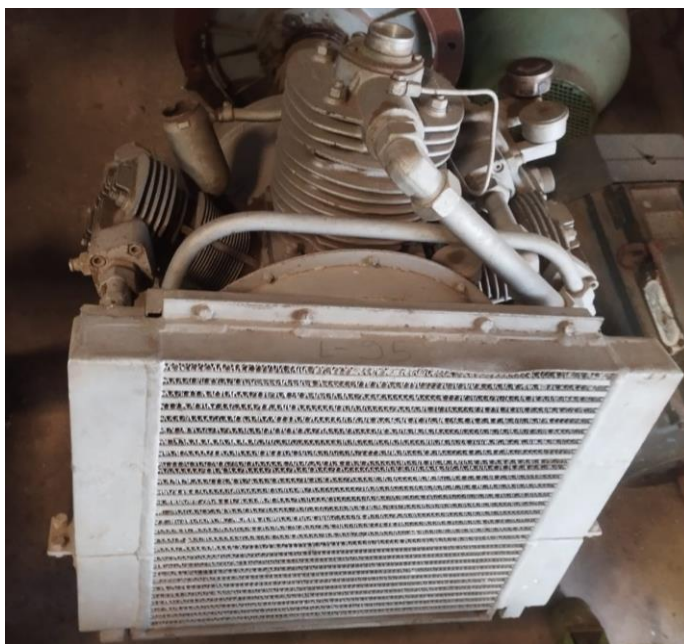




**Hatlapa L95 Air stage compressor.
3 off**



Details :

Compressor 1	
Type	L95
Year of construction	1991
Capacity	95 M3/H
RPM	1480
Pressure	30 bar
Power required	20 kW

Compressor 2	
Type	L95
Year of construction	1996
Capacity	76 M3/H
RPM	1185
Pressure	30 bar
Power required	15,1 kW



RM Support BV

Burenweg 14, 7621 GX Borne (ind area De Veldkamp Noord) , The Netherlands

Phone: +31 (0)74 256 9777, Cell phone: +31 (0)6 427 20 672

E-mail: info@rm-support.nl, Internet: www.rm-support.nl, www.rm-support.com

Commercial Reg. Enschede No. 08133380, VAT No. NL 82 28 96 965 B01, IBAN: NL45 RABO 0317 2838 20

Unless notified or agreed on in writing, our General conditions govern all our tenders for and agreements on all our deliveries and services, registered by the Chamber of Commerce on November 14, 2013, number: 08133380. Any other conditions are herewith explicitly rejected by us. A copy of the conditions mentioned above is included or can be sent to you on request, free of charge. The conditions are also available on our website: www.rm-support.nl.



Compressor 3	
Type	L95
Year of construction	1996
Capacity	76 M3/H
RPM	1185
Pressure	30 bar
Power required	15,1 kW



RM Support BV

Burenweg 14, 7621 GX Borne (ind area De Veldkamp Noord) , The Netherlands

Phone: +31 (0)74 256 9777, Cell phone: +31 (0)6 427 20 672

E-mail: info@rm-support.nl, Internet: www.rm-support.nl, www.rm-support.com

Commercial Reg. Enschede No. 08133380, VAT No. NL 82 28 96 965 B01, IBAN: NL45 RABO 0317 2838 20

Unless notified or agreed on in writing, our General conditions govern all our tenders for and agreements on all our deliveries and services, registered by the Chamber of Commerce on November 14, 2013, number: 08133380. Any other conditions are herewith explicitly rejected by us. A copy of the conditions mentioned above is included or can be send to you on request, free of charge. The conditions are also available on our website: www.rm-support.nl.