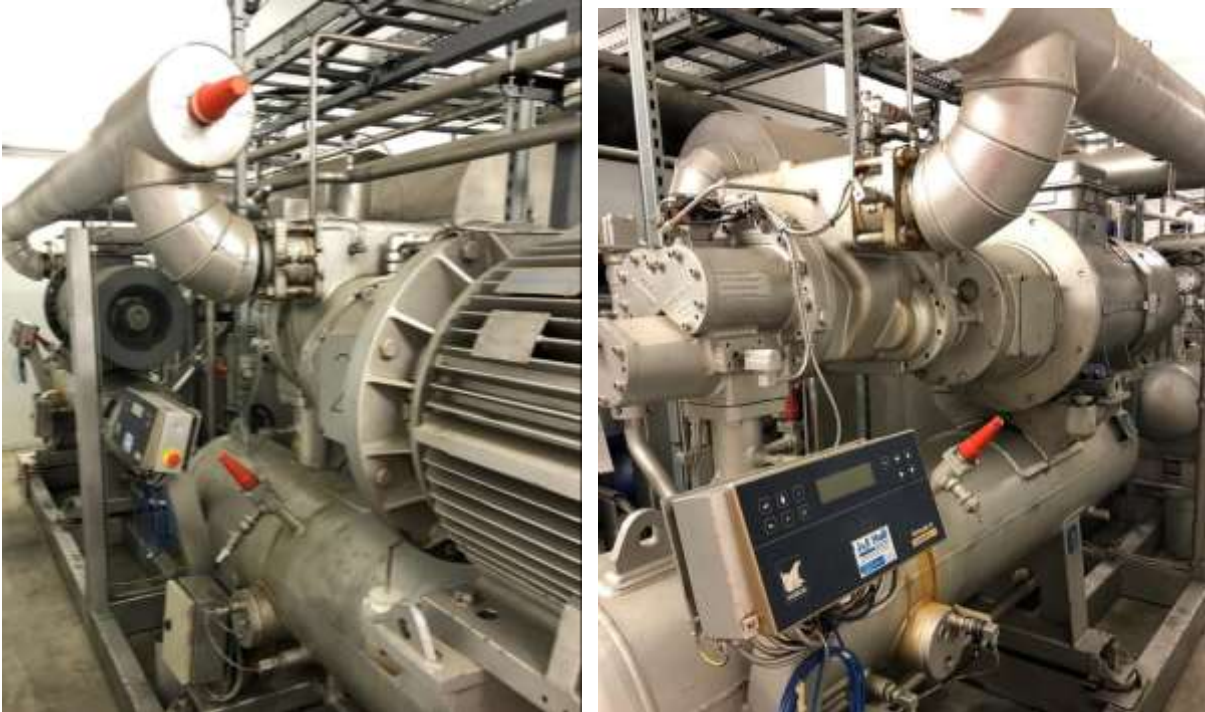




1 off Sabroe PAC 151 DUO chiller 2008 NH3 / glycol



Very nice Glycol chiller Sabroe 151 duo PAC . compact and suitable for speed drive .
One is already speed driven.
Each compressor unit is controlled by a Unisab Pro II .
PHE evaporator with gravity vessel all on one base frame.

Duty : 674 kw by -9,5 °C/ + 32 °C.
E-motors: 150 kW



RM Support BV

Mekkelholtsweg 20 , 7523 DE Enschede , The Netherlands

Cell phone: +31 (0)6 427 20 672

E-mail: info@rm-support.nl, Internet: www.interses.eu , www.rm-support.com

Commercial Reg. Enschede No. 08133380, VAT No. NL 82 28 96 965 B01, IBAN: NL45 RABO 0317 2838 20



RM Support BV

Mekkelholtsweg 20 , 7523 DE Enschede , The Netherlands

Cell phone: +31 (0)6 427 20 672

E-mail: info@rm-support.nl, Internet: www.interses.eu , www.rm-support.com

Commercial Reg. Enschede No. 08133380, VAT No. NL 82 28 96 965 B01, IBAN: NL45 RABO 0317 2838 20



RM Support BV

Mekkelholtsweg 20 , 7523 DE Enschede , The Netherlands

Cell phone: +31 (0)6 427 20 672

E-mail: info@rm-support.nl, Internet: www.interses.eu , www.rm-support.com

Commercial Reg. Enschede No. 08133380, VAT No. NL 82 28 96 965 B01, IBAN: NL45 RABO 0317 2838 20

Unless notified or agreed on in writing, our General conditions govern all our tenders for and agreements on all our deliveries and services, registered by the Chamber of Commerce on November 14, 2013, number: 08133380. Any other conditions are herewith explicitly rejected by us. A copy of the conditions mentioned above is included or can be send to you on request, free of charge. The conditions are also available on our website: www.rm-support.nl.