



**Complete PLC based on a Mitsubishi 300 in combination with a UNISAB III compressor controller**

**available: 3 off**



**Description :**

**Complete PLC based on a 300 in combination with a Sab Pro III compressor controller. These sets were installed on a Stall S57 – compressor unit – basic each compressor unit with Full flow oilpump is suitable for re-installing. The UNISABPro III is one of the most flexibel compressor controllers on the market**



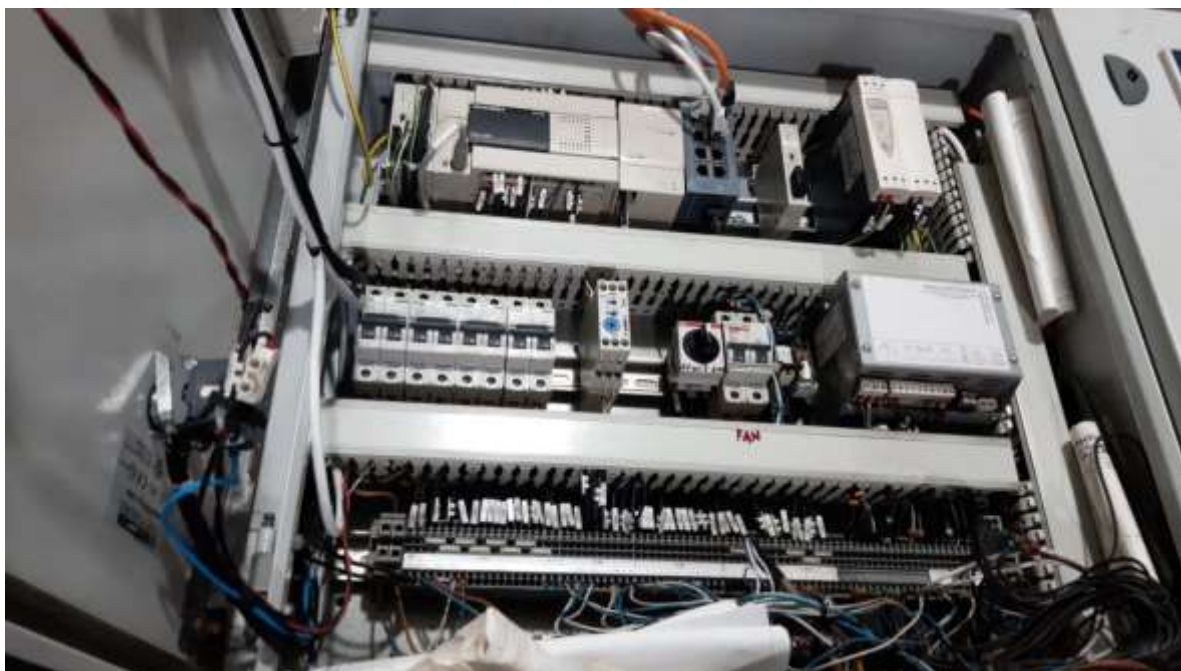
**RM Support BV**

Mekkelholtsweg 20, 7523 DE Enschede , The Netherlands

Phone: +31 (0)74 256 9777, Cell phone: +31 (0)6 427 20 672

E-mail: [info@rm-support.nl](mailto:info@rm-support.nl), Internet: [www.interses.eu](http://www.interses.eu), [www.rm-support.com](http://www.rm-support.com)

Commercial Reg. Enschede No. 08133380, VAT No. NL 82 28 96 965 B01, IBAN: NL45 RABO 0317 2838 20



**RM Support BV**

Mekkelholtsweg 20, 7523 DE Enschede , The Netherlands

Phone: +31 (0)74 256 9777, Cell phone: +31 (0)6 427 20 672

E-mail: [info@rm-support.nl](mailto:info@rm-support.nl), Internet: [www.interses.eu](http://www.interses.eu), [www.rm-support.com](http://www.rm-support.com)

Commercial Reg. Enschede No. 08133380, VAT No. NL 82 28 96 965 B01, IBAN: NL45 RABO 0317 2838 20