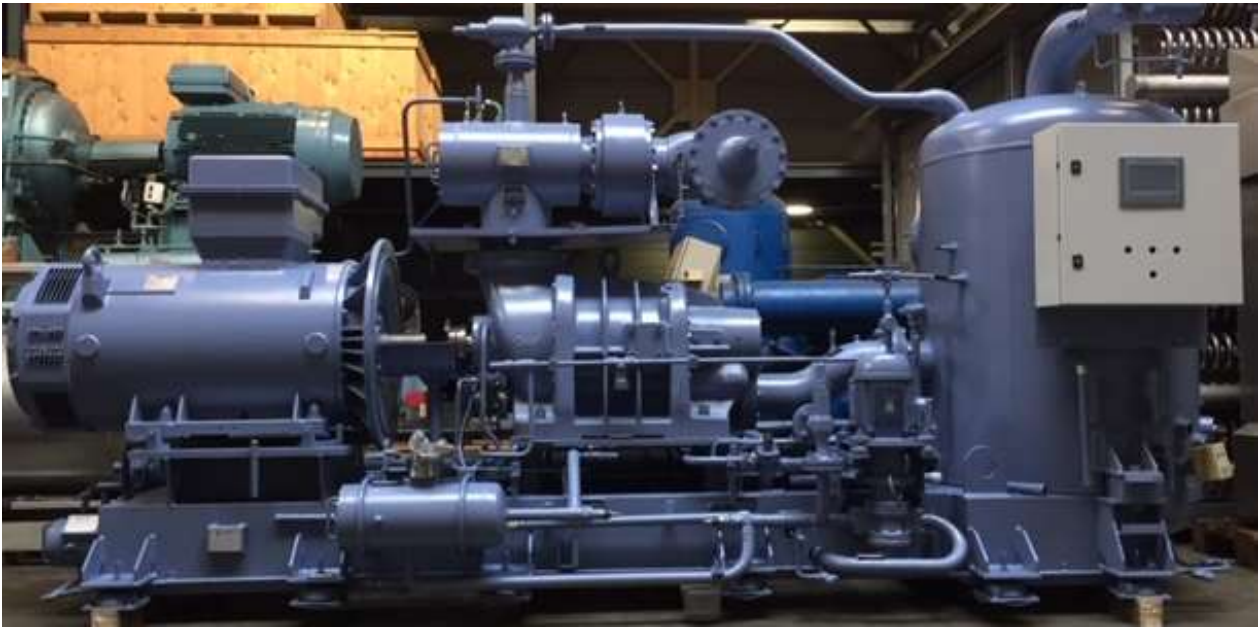




**Very nice an complete Grasso Unit based on an Grasso YR-26B -28 of 2010**

**E-motor 400 KW  
Water cooled oil cooler  
Full flow oil pump**



**In general :**

Well maintained Grasso unit design for a wide range of conditions . The compressor block is a Grasso YR-Y26B-28 . The Installed E-motor is 400 kW . The unit is suited with a big volume oil separator , the use of industrial Heavy duty compressor models. The full flow oil pump provide a forced lubrication at all times. At this moment the oil cooler is shell and type water cooled, on request the oil cooler can be exchanged for a NH3 type. The controlling of the unit is by a Siemens PLC/ Touchscreen control .

**The compressor:**

The existing KAB S3-2500 is exchanged by a Grasso Y26B-28 of 2010 with a Vi 2.6 the swept volume is 2390 m3/hour.

**The unit is constructed in 1994, the compressor is 2010 and the PLC is 2021.**



**RM Support BV**

Burenweg 14, 7621 GX Borne ( ind area De Veldkamp Noord) , The Netherlands

Phone: +31 (0)74 256 9777, Cell phone: +31 (0)6 427 20 672

E-mail: [info@rm-support.nl](mailto:info@rm-support.nl), Internet: [www.rm-support.nl](http://www.rm-support.nl), [www.rm-support.com](http://www.rm-support.com)

Commercial Reg. Enschede No. 08133380, VAT No. NL 82 28 96 965 B01, IBAN: NL45 RABO 0317 2838 20