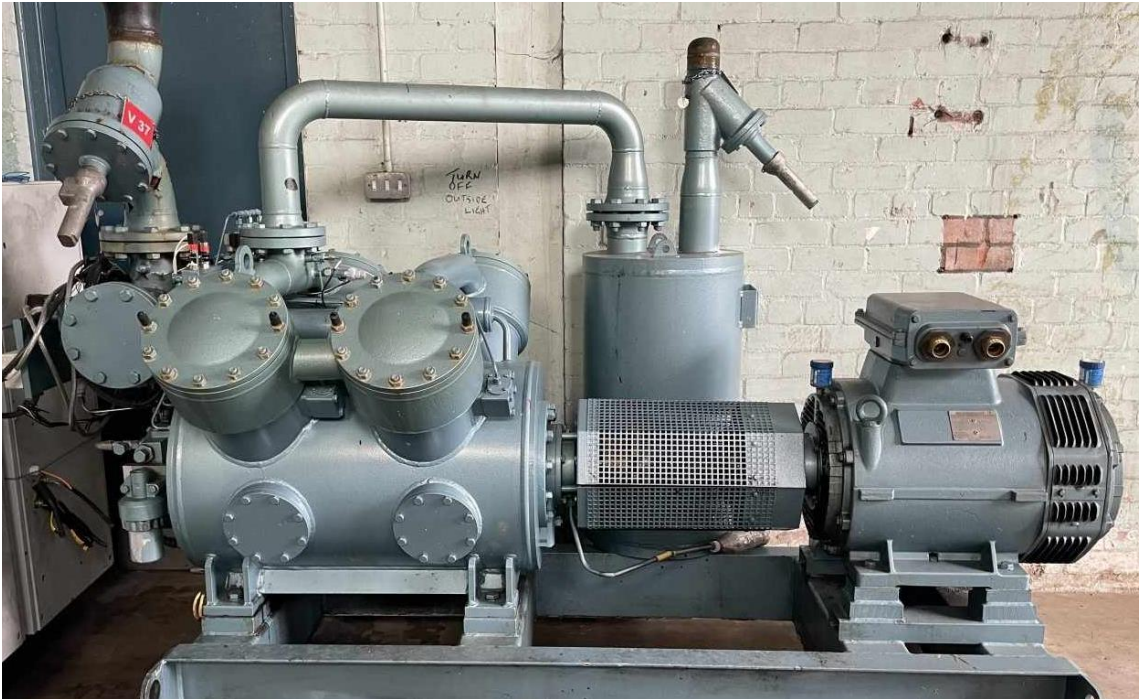




**Grasso RC412E Unit available
2002
NH3 application**



Very maintained Grasso RC412E compressor unit – direct drive of 2002.
The unit is suited with a 55 kW E-motor. The RPM are 1465.
The models of Grasso RC 412E are design for 1500 RPM.
A stable investment is compressor unit, which proven themselves more than 40 years.
The max sweep volume is 796 m³/h



RM Support BV

Burenweg 14, 7621 GX Borne (ind area De Veldkamp Noord) , The Netherlands

Phone: +31 (0)74 256 9777, Cell phone: +31 (0)6 427 20 672

E-mail: info@rm-support.nl, Internet: www.rm-support.nl, www.rm-support.com

Commercial Reg. Enschede No. 08133380, VAT No. NL 82 28 96 965 B01, IBAN: NL45 RABO 0317 2838 20